

Split-Core DC Voltage Output Transducer

DCT-0010-XXX, 5 VDC Output

10mm Opening With Ratings Up to 50 Amps

Description:

Magnelab's DCT-0010-XXX split-core current transducer "senses" AC current up to 50 Amps passing through the center conductor. Split-core transformers are ideal for installation on existing electrical wiring by snapping around the conductor. The DCT-0010-XXX has a self-locking mechanism.

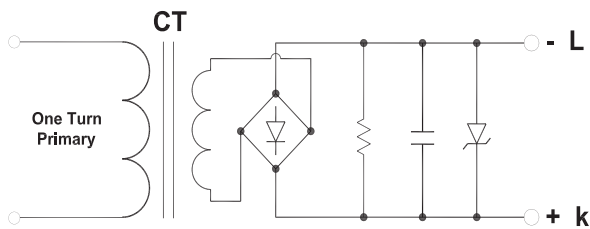
Features:

- Rated input up to 50 Amp AC
- Output of 5 Vdc at rated current (7.5 Vdc limit built in)
- Accuracy $\pm 2\%$ full scale
- Operating temperature -20°C to 50°C
- Line Response Time 300 ms
- Output Ripple within 5% of Output Voltage
- Frequency range 50/60 Hz
- 2 X M3-Screw terminals
- System Voltage: CAT III 600VAC
- UL recognized IEC 61010-1, CE, and RoHS Compliant



PART NUMBER AND RATING		OUTPUT IMPEDANCE
DCT-0010-005	5 Amp	7 kOhms
DCT-0010-010	10 Amp	8.5 kOhms
DCT-0010-025	25 Amp	6.8 kOhms
DCT-0010-050	50 Amp	6.2 kOhms

DIMENSION	INCH	MM
A	2.00	51.00
B	1.30	33.00
C	0.93	23.60
D	1.05	26.70
E	0.58	14.70



SCHEMATIC

