

# Split-Core AC Current Sensor SCT-2000

## 2.00" Opening With Ratings Up To 1500 Amps

### Description:

Magnelab's SCT-2000 Series split-core current sensors "sense" AC current up to 1500 Amps passing through the center conductor. Split-core transformers are ideal for installation on existing electrical wiring by snapping around the conductor. The SCT series have a self-locking mechanism. Custom outputs and other parameters available at customer request.

### Features:

- Inputs: Rated up to 1500 Amp
- Outputs: 0.333 Volt at rated current
- Linearity accuracy  $\pm 1\%$
- Accuracy at 10% to 130% of rated current
- Phase angle  $< 2$  degrees measured at 50% rated current

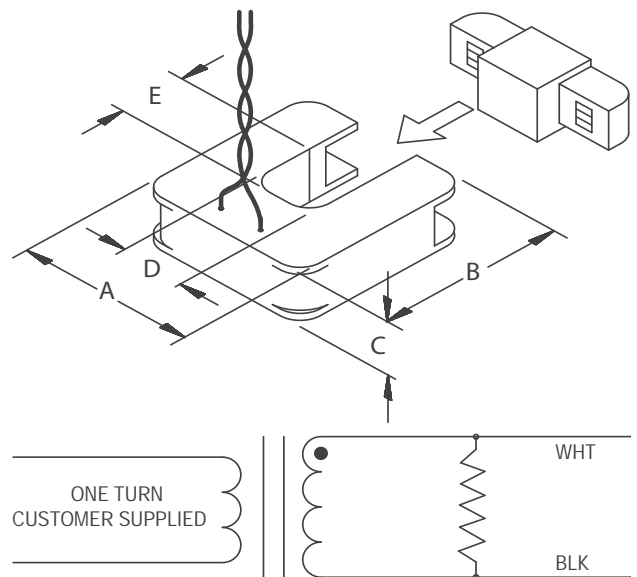
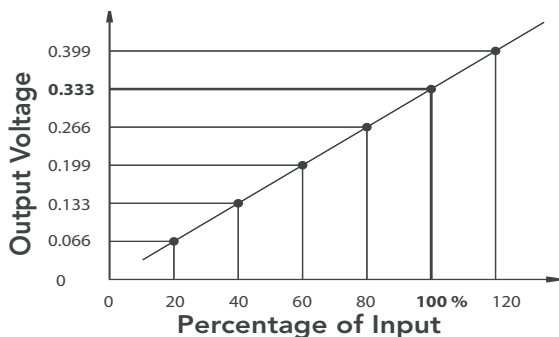


- Operates from 50 Hz to 400 Hz
- 8 ft. twisted-pair lead, 22 AWG
- Maximum Voltage: 600 V (on bare conductor)
- UL Standard 61010-1, EN 60044-1
- Operating temperature:  $-20^{\circ}\text{C}$  to  $+75^{\circ}\text{C}$
- Storage temperature:  $-40^{\circ}\text{C}$  to  $+90^{\circ}\text{C}$

PART NUMBER AND RATING	
SCT-2000-000	No Burden Resistor*
SCT-2000-100	100 Amp
SCT-2000-150	150 Amp
SCT-2000-200	200 Amp
SCT-2000-400	400 Amp
SCT-2000-600	600 Amp
SCT-2000-800	800 Amp
SCT-2000-1000	1000 Amp
SCT-2000-1200	1200 Amp
SCT-2000-1500	1500 Amp

\* Zener diode limits the output voltage to 22 V

DIMENSION	INCH	MM
A	4.750	120.65
B	5.000	127.00
C	1.200	30.48
D	2.000	50.80
E	2.000	50.80



Magnelab reserves the right to modify products to make improvements without advance notice.